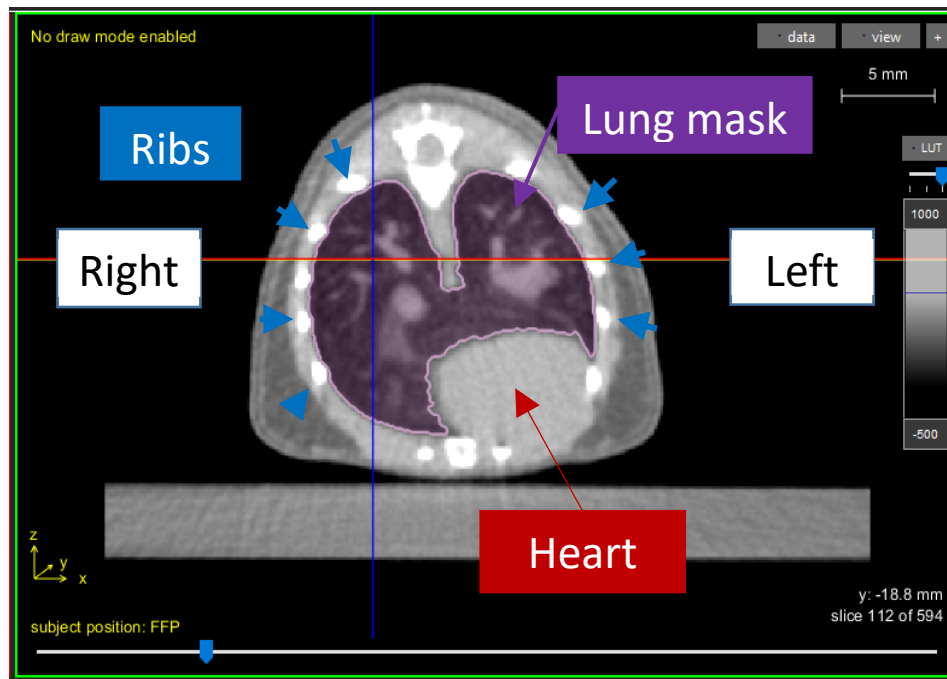


## Manual annotation instructions:

- **NOTE:** All manual segmentations should be performed on axial slices of the whole-body  $\mu$ CBCT.
- **Define the outer extensions of the lungs (figure 1).**
  - o Lung volume ( $[-600, -200]$  Hounsfield Units (HU))
  - o The ribs ( $[1000, 2000]$  HU) and the diaphragm ( $[250, 650]$  HU) form the outer layers of the lungs.



- **Define the outer extensions of the tumor within the left lung lobe (figure 2).**
  - o Search for the tumor in the left lung lobe ( $[300, 600]$  HU; green selection).
  - o Scroll to the middle of the tumor volume and manually delineate the structure (Drawing tools: Free hand or if possible 2D region growing).
  - o Scroll through the tumor volume and determine the outer extensions cranial and caudal of the middle of the tumor volume. Use the coronal and median panel to determine the outer extensions (see green ruler)
- **Manually delineate the lung tumor volume**
  - o Starting from the middle manually delineate all slices between the middle and outer extensions. If possible, use 2D region growing with a predefined threshold (300 HU)

